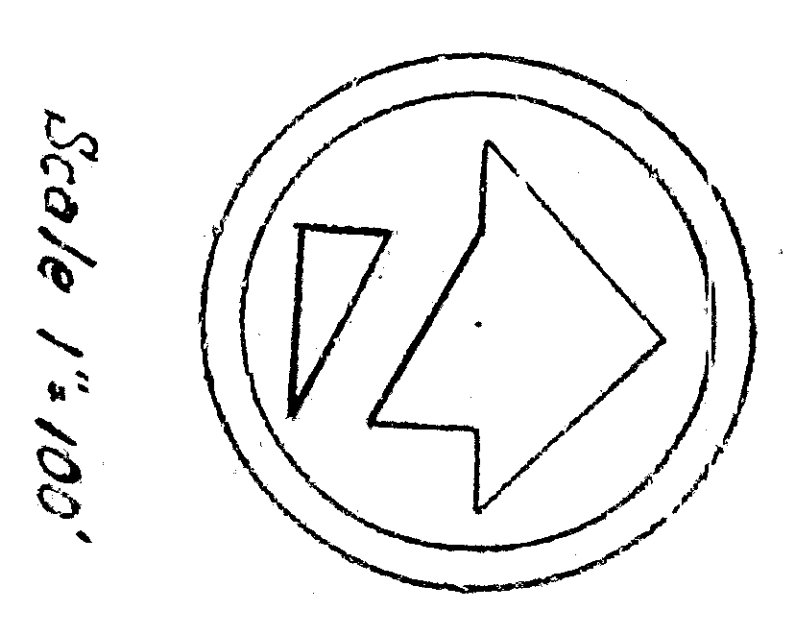
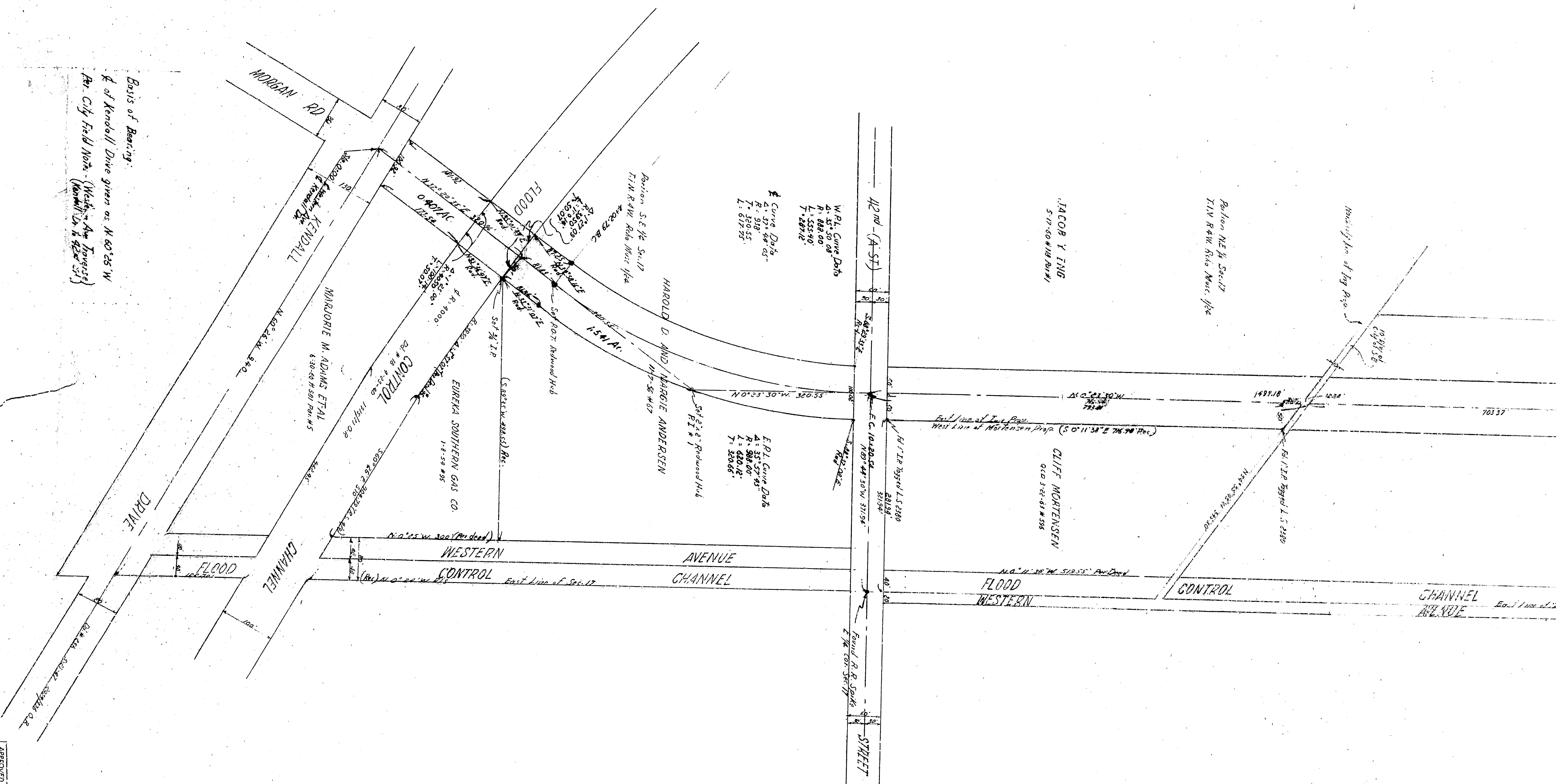


Basis of Bearings:
 E of Kendall Drive given as N 60° 26' W
 Per City Field Note (March - Apr 1933)
 (Kendall is 422.53')

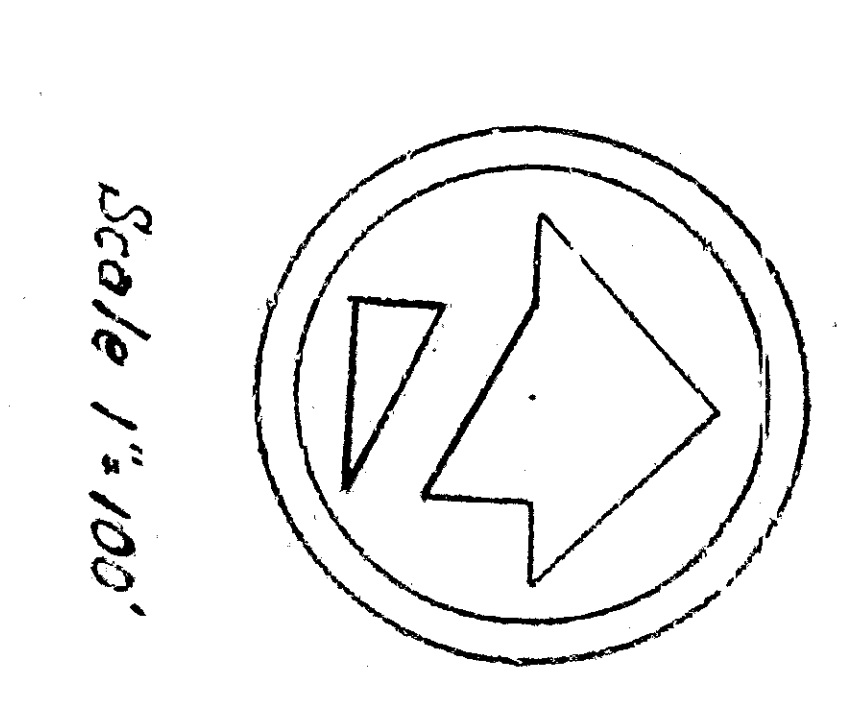


Scale 1"=100'

APPROVED	Scale	1"=100'	1933
DESIGNED BY	CITY ENGINEER		
DRAWN BY	CITY ENGINEER		
CITY OF SAN BERNARDINO			
DEPARTMENT OF ENGINEERING			
RIGHT OF WAY MAP			



Basis of Bearings:
 E of Kendall Drive given as N 60° 28' W
 Per City Field Note (March - Apr 1952)
 (Kendall Dr. & Morgan Rd.)



APPROVED	Scale	1952
CITY ENGINEER	1" = 100'	
REGISTERED CIVIL ENGINEER NO. 4254		
DRAWING NO. 100		
DRAWN BY		
Checked		
Approved		
City of San Bernardino		
DEPARTMENT OF ENGINEERING		
CITY OF SAN BERNARDINO		
RIGHT OF WAY MAP		